

How to create PDF files

For digital transmissions

Guideline made with XPress 6 and Adobe Acrobat 6, MAC OS X 10

Specifications for PostScript file creation prior to creation of PDF

All Acrobat PDF files must be produced out of level 3 composite PostScript files using Acrobat Distiller v4.05 or higher.

“PDF Writer” and “Save as PDF” must not be used. No security restrictions must be applied.

Note that any changes to the artwork must be made in the original program (Quark XPress). A new PDF must then be created from the amended PostScript file, using Acrobat Distiller.

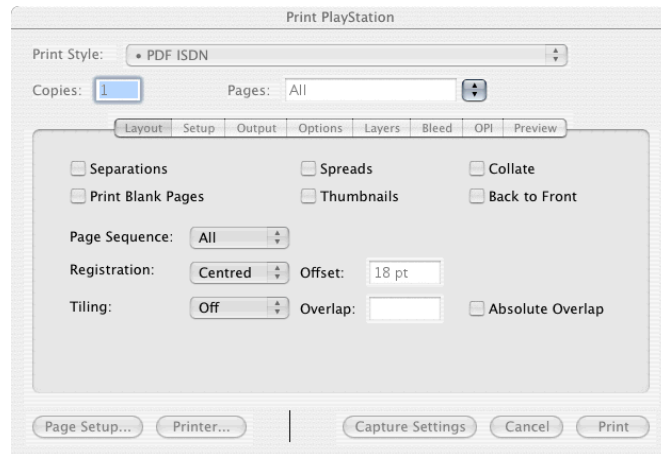
To ensure that the XPress document is print ready check the following:

- The correct template has been used and all required trim, bleed and registration marks are in position outside of the live / bleed areas.
- All bleed areas are filled by images / graphics to the full 3mm required.
- All placed images / graphics are CMYK (plus required special colours) and not RGB or LAB
- No special colours are present within the placed images / graphics except those specifically required for the product
- All images have a minimum of 300dpi output resolution
- All links to graphics / images are maintained and are not suppressed (Utilities menu: Usage / Pictures tab)
- Only eps and tiff files are used (no CT or DCS files should be used).
- Only Postscript type 3 fonts are used.
- All document and placed eps fonts are loaded and available to XPress (Utilities menu: Usage / Fonts tab)
- All fonts should read <<plain>> for style setting
- No trapping has been applied. Defined trappings are ignored in a composite workflow. This will be added when the final PDF is separated on the Printer's RIP within a range of 0.07-0.1 mm for all standard packaging.

It is a good idea to print your document (last version) to a laserwriter for a visual check. Print composite files and separated files to a laserwriter (this is a very useful form of pre-flighting your artwork, which can save valuable time and money and should be performed at the earliest possible stage).

Creating a high res composite Postscript file

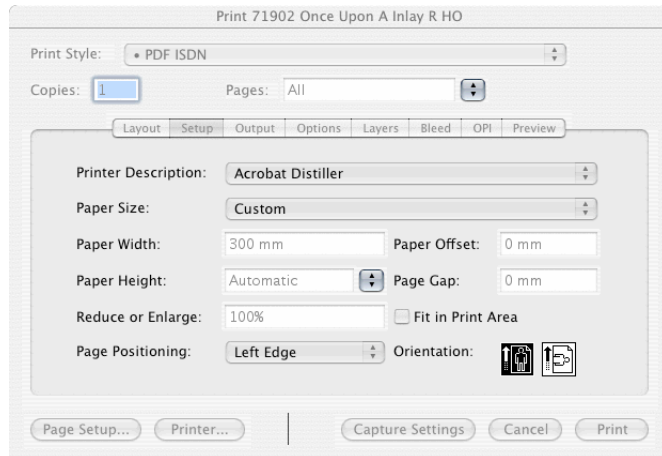
Quark XPress Print menu



Layout

Registration marks must be incorporated into the artwork. If they do not appear on the Quark XPress document they can be added at this stage by selecting <Centred> in the Registration field and by adding Bleed and Offset data.

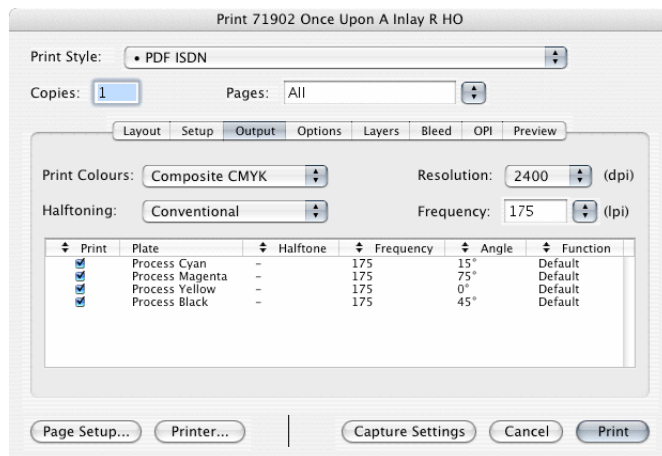
Note: If you wish to avoid trim marks touching the bleed area set the offset well above default such as 18pt.



Setup

For Printer Description field select <Acrobat Distiller>. This is the printer description file loaded when installing Acrobat Distiller. Tab through the Paper Size fields and the enter data appropriate for your document. If the document is of a custom size you will need to input the correct width. The Paper Height field should be left on <Automatic>.

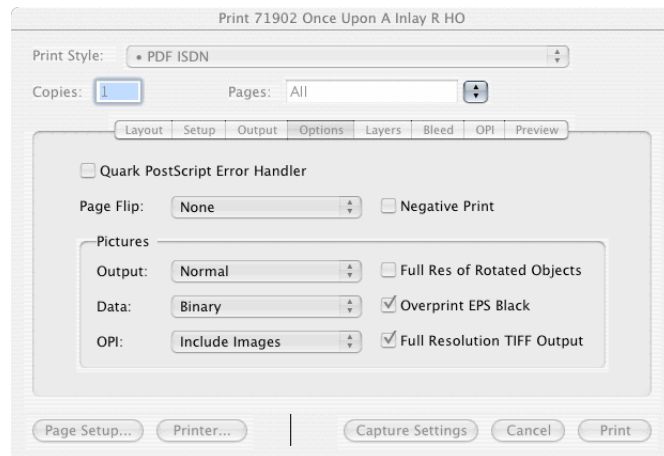
Note: If you have selected <registration> in the previous window be sure to include extra page width to accommodate bleed and offset.



Output

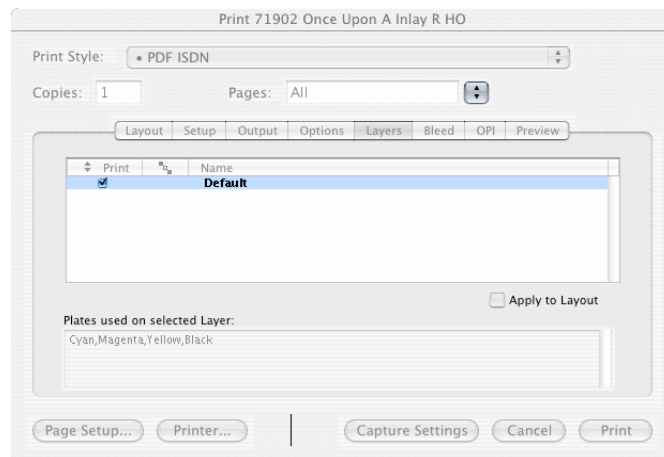
Select <Composite CMYK> for your Print Colours and set the Resolution to 2400 dpi and Frequency to 175 lpi. If spot colours are used change Print Colours to <DeviceN>.

Note: All colour separations have to be marked for print.



Options

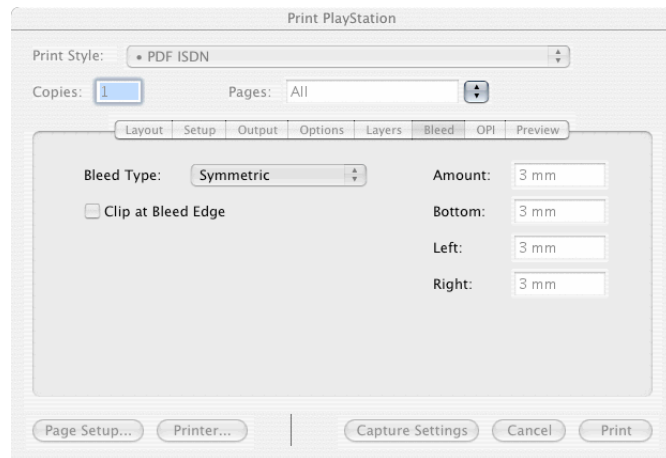
Use the default settings as shown or tab through the fields and select as appropriate to your workflow.



Layers

All Layers for output have to be marked in the layers list.

Note: If you select one layer you can see all used colors under "Plates used on selected Layer:"



Bleed

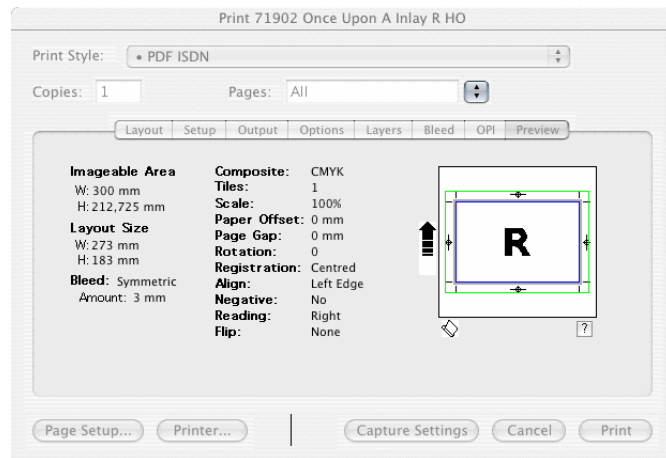
Please set bleed to 3 mm for standard. Bleed type symmetric.



OPI

Please turn off the OPI if you are not completely sure that it's needed for your workflow. If possible even deactivate the OPI extension.

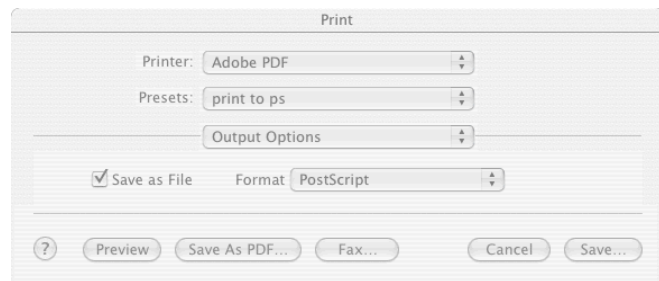
Note: OPI comments are removed if you use correct Acrobat Distiller settings!



Preview

Document area and page size should match each other if registration has not been added. If registration has been selected, Bleed and offset should fit within the page area.

Once you have customised your print setting press the Printer... button on the bottom left of the window.



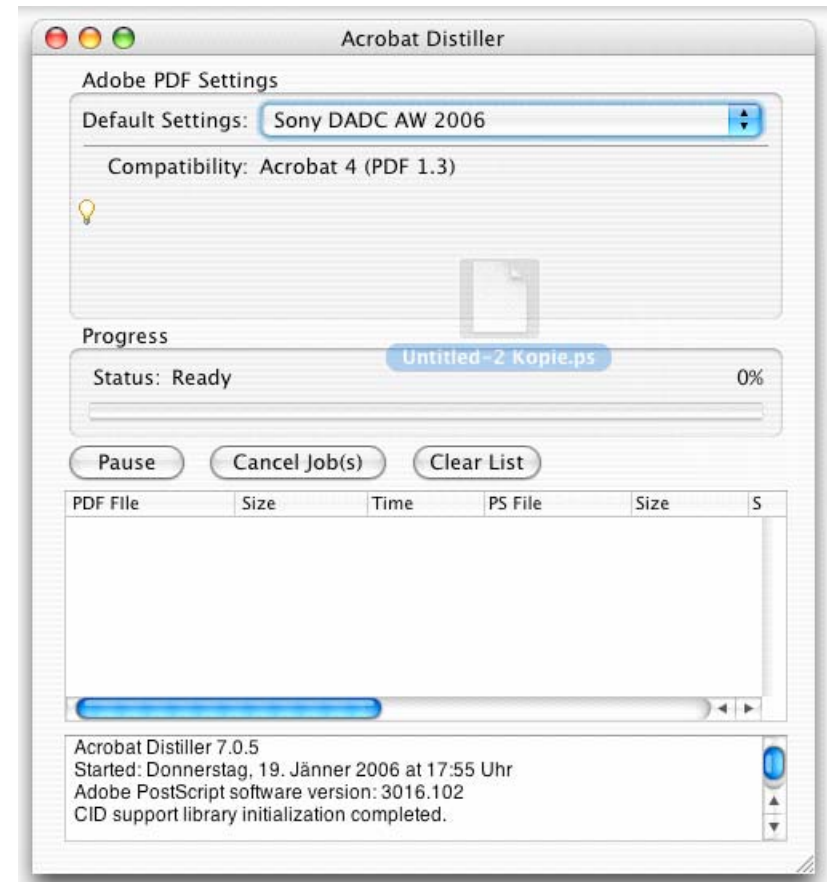
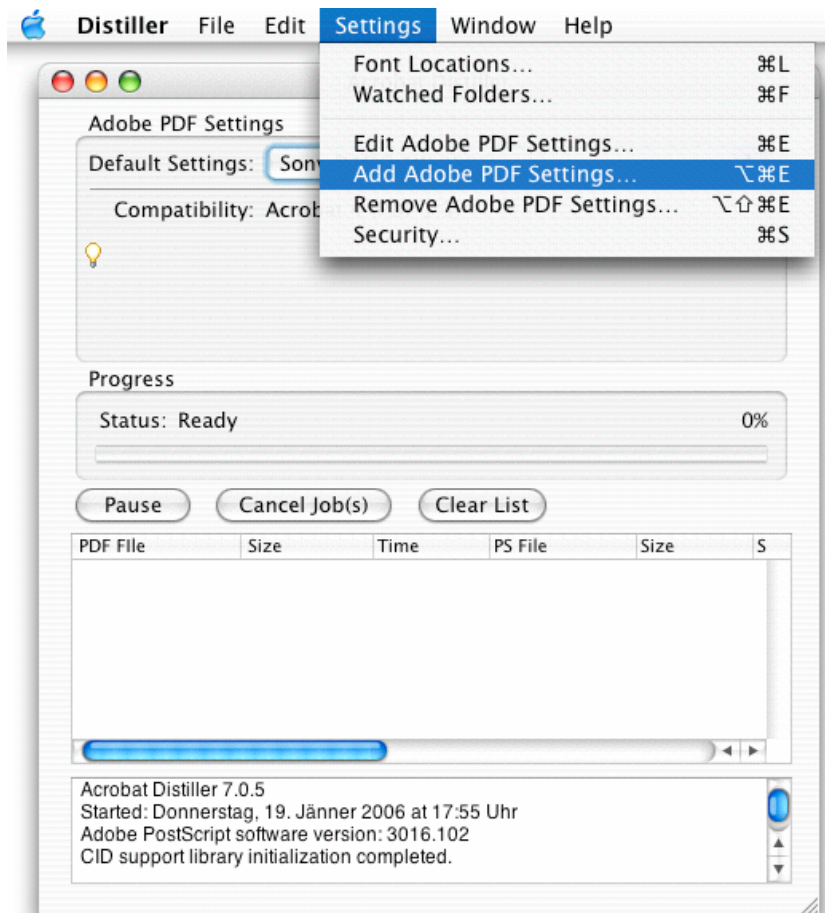
Printer

Select <Adobe PDF> as printer and <Save file as PostScript> under Output Options.

Note: You can save the output options e.g. <Print to PS> as presets.

Acrobat v6 high resolution PDF creation

- 1.) Import the Sony DADC HiRes Setting into Acrobat Distiller to be found under “Support Files/Acrobat Distiller Settings” and use them for every PDF you’d like to send to Sony DADC
- 2.) Drag the Postscript file into the Acrobat Distiller window and receive a high resolution PDF



Specifications for WAM!NET/FTP/ISDN transmission of final files:

- Perform an outgoing check of all your files prior to submission
 - all components present
 - dimensions, trim and registration marks, bleed
 - do they print OK?
 - all fonts embedded
 - high resolution pictures, logos - 300dpi
 - colour space CMYK

We strongly recommend to use a pre-flight check tool such as PitStop from Enfocus. A check profile for PitStop can be obtained from Sony DADC.

- Put all data in a main folder and name it with the catalogue number, artist and title
e.g.>5125845000, PASCAL OBISPO, FAN<
- All final packaging artwork files must be supplied as a high resolution composite PDF.
- An information text file must be included with all relevant job details e.g. catalogue number, print details, contact address, specials, etc.



- Fonts folder should contain no subfolders to avoid font conflicts.
- Confirmation of which orders were sent should be supplied via e-mail after successful transmission to Customer Service DADC.
- All files supplied must be compressed in an archive (preferably "StuffIt" .sea, .sit). Compress the folder containing all components, the decompression at Sony DADC will serve as a verification of transmission.
- Please don't send any graphic files as e-mail attachments. DADC will only accept ISDN/WAM!NET transmissions.
- Please do not send bits and pieces of a product. DADC will only accept whole transmissions.

